



St. Jude Student Ministries
204 North U.S. Highway 1 – Tequesta

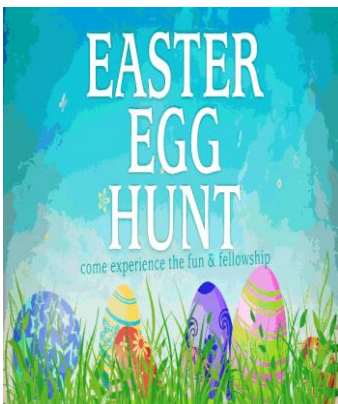
VOLUNTEER OPPORTUNITIES

(Living Stations of the Cross Performance)
Palm Sunday (April 14th) – starting at: 4:00 PM

Volunteers are needed to be cast members for our annual production. There are only a few speaking parts. ((2 for 1)) service hours given for both practices and for the actual performance. Practice dates and times are:



1. Saturday, March 30th: 10:00 AM to roughly 12:00 Noon
2. Saturday, April 6th: 10:00 AM to roughly 12:00 Noon
3. Saturday, 13th: 10:00 AM to roughly 12:00 Noon
4. Saturday, April 13th: 12:00 Noon to roughly 2:00 PM –
Setting-Up the Courtyard Area



(Annual Easter Egg Hunt)
Holy Saturday (April 20th) – starting at: 8:00 AM

Volunteers are needed to help hide prize filled eggs along with other special items for our little participants to find ! Volunteers are also needed for various clean-up and break-down duties. Volunteers will be needed from: 8:00 AM to roughly 12:00 Noon.

MAKE A *Difference*

St. Jude Student Leadership Academy
Come and be Part of our Amazing Leadership Team

Next Level 1 Training – April 26th and April 27th – Held at St. Jude, Tequesta

Friday, April 26th – from: 6:00 to 10:00 PM
Saturday, April 27th – from: 9:00 AM to 5:00 PM

An amazing opportunity for both 8th grade and high school age students to participate in a three (3) phase comprehensive and progressive training program that will enable them to not only plan and lead annual summer programs, but also be the very focal point for future service and mission endeavors.

Successful completion of this incredible platform will not only provide an innovative approach to leadership, but also offer a profound perspective into the hardships of our brothers and sisters in most need. Adding this program to your resume will ultimately look extremely impressive on future college applications.

I sincerely hope that you will accept this invitation and challenge to not only participate in this recongnized “National Level” program, but also become one of our unquestioned leaders! For additional information on this remarkable program, please contact: Frank Faranda: 561-748-8805 or ymdirector@stjudechurch.net



(On-Going Efforts in our Food Pantry)

Volunteers are needed on a monthly basis to help clean and organize our pantry, as well as filter through current stock to ensure food is within acceptable dates. The following are dates and times that we'll meet.

1. Saturday, May 4th: 10:00 AM to roughly 12:00 Noon
2. Saturday, June 1st: 10:00 AM to roughly 12:00 Noon
3. Saturday, August 17th: 10:00 AM to roughly 12:00 Noon
4. Saturday, September 7th: 10:00 AM to roughly 12:00 Noon
5. Saturday, October 5th: 10:00 AM to roughly 12:00 Noon
6. Saturday, November 2nd: 10:00 AM to roughly 12:00 Noon
7. Saturday, December 7th: 10:00 AM to roughly 12:00 Noon



ALSO... Looking for an individual or individuals who would like to empty our food bins and stock our shelves on a weekly basis ! Individual(s) will be needed on a weekday – after school is fantastic ! ((Service Hours Gladly Given !!))

(Back-To-School Supply Drive)

Saturday, August 3rd – from: 10:00 AM to roughly 1:00 PM

Volunteers are needed to help separate and fill backpacks with donated school supplies for elementary – middle – and high school age students. Help us ensure that all our students who are in most need start the year off right by receiving all their required resources !



(Annual Pumpkin Carving and Halloween Costume Contest)
Sunday, October 27th – Competition Beginning at: 11:30 AM

Volunteers are needed from: 10:30 AM to roughly 1:30 PM. Volunteers are needed to help set-up and for general clean-up and break-down duties !

Please Note: Volunteers are also most welcome to be part of the competition and carve their own pumpkin !!



(Great Holiday Food Drive)
Saturday, November 23rd and Saturday, December 21st
From: 10:00 AM to roughly 1:00 PM

Volunteers are needed on both days to help separate donated food items and to comprise both Thanksgiving and Christmas Food Baskets that will be delivered to those in most need within both our parish and local communities



(Annual Night in Bethlehem Living Nativity and Christmas Music Concert)
Saturday, December 14th – from: 6:00 to 10:00 PM

Volunteers are needed to be cast members for the Living Nativity Performance, as well as volunteers are needed to help serve food and for general clean-up and break down duties.

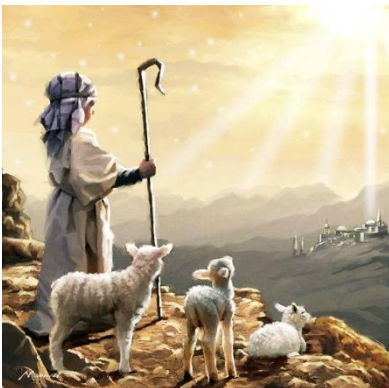
*** For Individuals Wanting to be Cast Members – Practice Dates and Times Are ***

1. Saturday, November 16th: 10:00 AM to roughly 12:00 Noon
2. Saturday, November 23rd: 10:00 AM to roughly 12:00 Noon
3. Saturday, November 30th: 10:00 AM to roughly 12:00 Noon
4. Saturday, December 7th: 10:00 AM to roughly 12:00 Noon

((2 for 1)) Service Hours Are Given To Cast Members for Both Practices and the Performance))

*** For Individuals Wanting to Help Serve Food and for General Clean-Up Duties ***

1. Volunteers are needed from: 5:30 to roughly 10:30 PM
2. Volunteers are asked to please wear: Black Pants and a Plain White: Tee – Polo – or Button-Down Style Shirt



To Secure Your Spot as Either a Cast Member for any of Our Productions, or as a Volunteer at Any of Our Opportunities, Please Contact:

Frank Faranda,
Director of Student Ministries
561-748-8805 – ymdirector@stjudechurch.net

